

## AQUATROL® COMBINATIONS

**4501**


### 4500 AQUATROL® Pressure Actuated Mixer

- Durable stainless steel balancing piston to equalize hot and cold supply pressures.
- Built-in shutoff for single handle operation
- Removable one piece upper and lower valve seat
- Internal parts of bronze and stainless steel
- Cast wall flange and lever handle, polished chrome plated
- Maximum operating pressure: 125 PSIG (860KPA)
- Adjustable high temperature limit stop set for 110°F\* (43°C)
- Color coded dial, Off through Hot, with directional indicators
- Angle checkstops, copper tube connection
- Plasterguard/thin wall mounting bracket included.
- H-05 ABS shower head, brass ball joint adjustable spray, arm and flange, 2.5 GPM, (9.5l/min)

Valve is ASSE · 1016 Certified



Valve is CSA · B.125-05 Certified

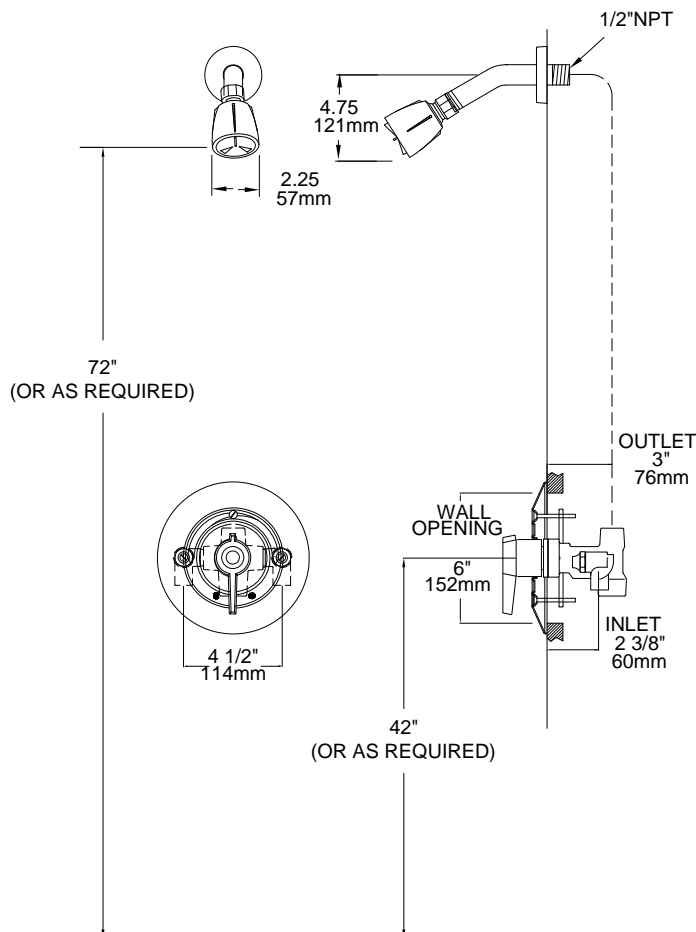
### OPTIONS:

- \_\_\_ SUFFIX H-03 large brass ball joint shower head in place of H-05
- \_\_\_ SUFFIX H-15 adjustable spray ball joint massage shower head 1.5GPM (5.7 l/min.) high-impact ABS body chrome plated
- \_\_\_ SUFFIX H-06 Institutional shower head in place of H-05
- \_\_\_ SUFFIX H-06-1.5 Institutional shower head 1.5GPM (5.7 l/min.) in place of H-05
- \_\_\_ SUFFIX AP Anchor plate with screws for H-06



**WARNING:** This product can expose you to chemicals including lead, which is known to the State of California to cause cancer. For more information, go to [www.P65Warnings.Ca.gov](http://www.P65Warnings.Ca.gov)

Note: Leonard Valve Company reserves the right of product, or design modifications without notice or obligation.



<b>Engineer's Approval</b>	Job # _____
	Arch/Eng. _____
	Contractor _____